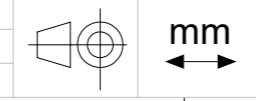


GDW		CG POSITION		
ENGINE	WET WEIGHT (kg)	L(mm)	D(mm)	H(mm)
1103A-33G	959	1083	449	567
1103A-33TG1	990	1062	475	568
1103A-33TG2	1037	1045	470	565
4TNV98-GPGE	801	1108	491	603
4TNV98-IGPGE	801	1053	480	580
4TNV98T-GPGE	823	1113	479	590
4TNV98T-ZGPGE	840	1123	476	593
4TNV98-ZGPGE	799	1057	478	578
4TNV98-GPGEC	801	1108	491	603
4TNV98T-GPGEC	823	1113	479	590

Note: CG positions and weights have been calculated with Meccalte alternators in standard configuration



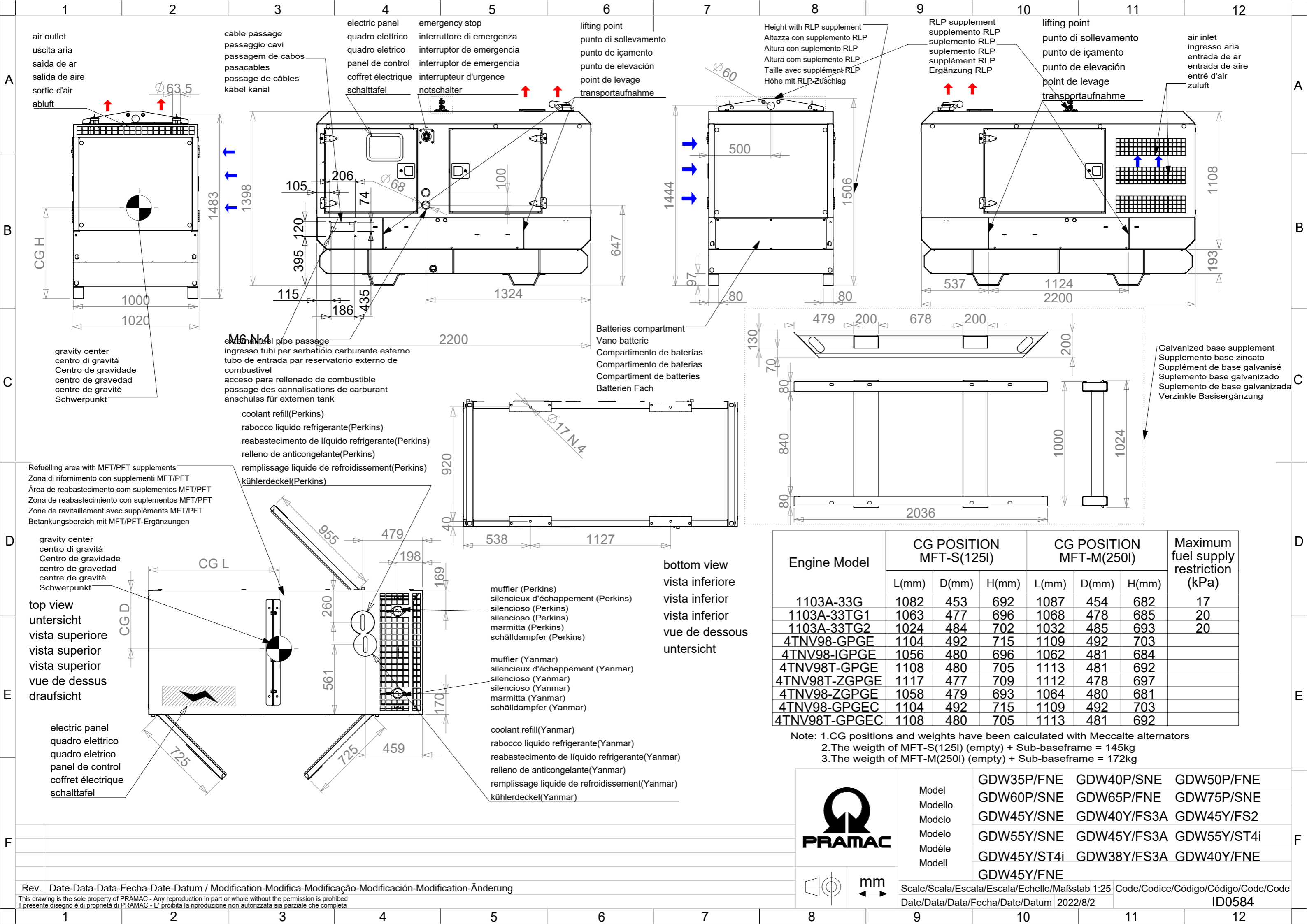
Model	GDW35P/FNE	GDW40P/SNE	GDW50P/FNE
Modello	GDW60P/SNE	GDW65P/FNE	GDW75P/SNE
Modelo	GDW45Y/SNE	GDW40Y/FS3A	GDW45Y/FS2
Modelo	GDW55Y/SNE	GDW45Y/FS3A	GDW55Y/ST4i
Modèle	GDW45Y/ST4i	GDW38Y/FS3A	GDW40Y/FNE
Modell	GDW45Y/FNE		



Scale/Scala/Escala/Escaleta/Echelle/Maßstab 1:20 Code/Codice/Código/Código/Code/Code
Date/Data/Data/Fecha/Date/Datum 2022/8/2 ID0584

Rev. Date-Data-Data-Fecha-Date-Datum / Modification-Modifica-Modificação-Modificación-Modification-Änderung

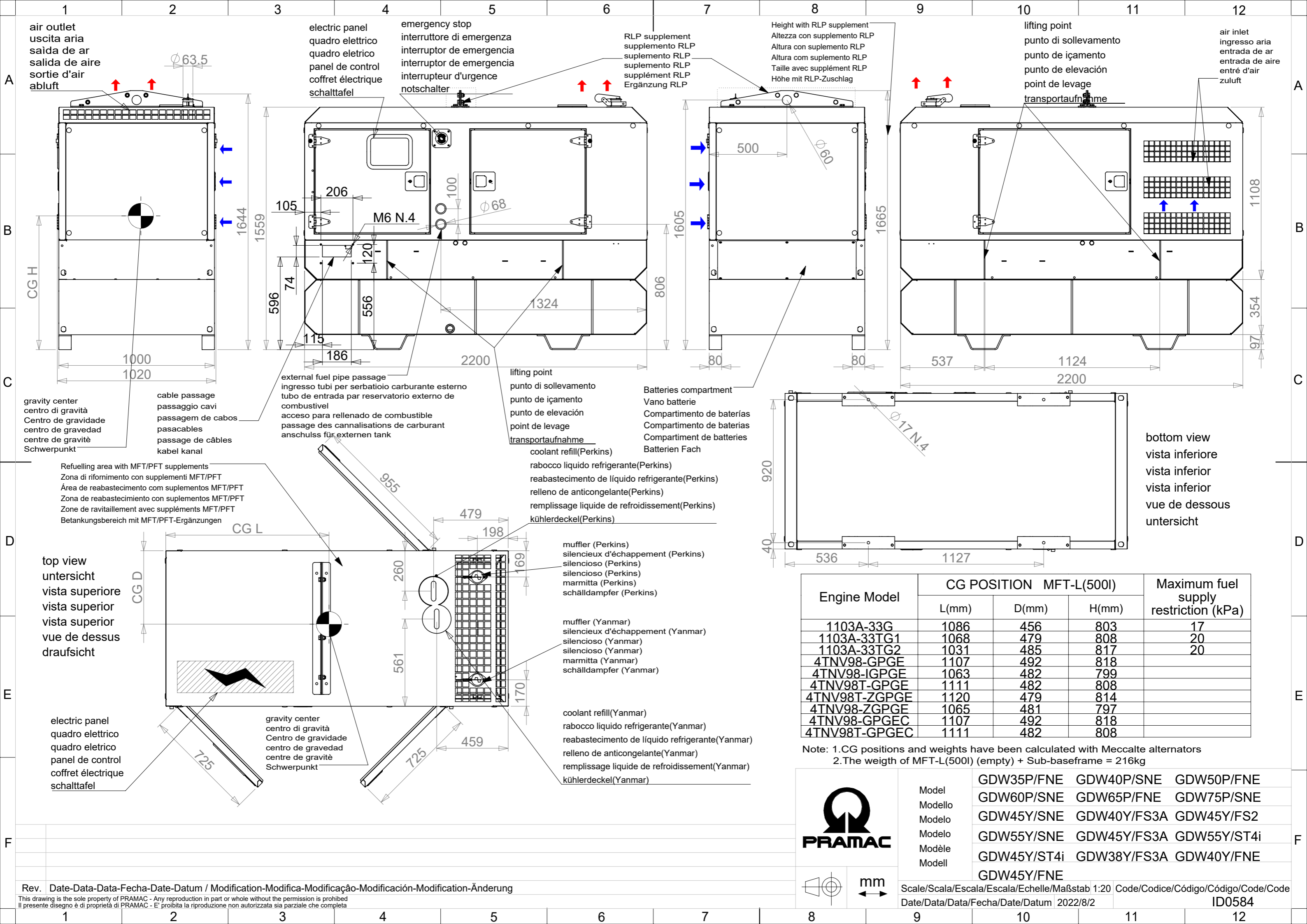
This drawing is the sole property of PRAMAC - Any reproduction in part or whole without the permission is prohibited
Il presente disegno è di proprietà di PRAMAC - E' proibita la riproduzione non autorizzata sia parziale che completa



Engine Model	CG POSITION MFT-S(125I)			CG POSITION MFT-M(250I)			Maximum fuel supply restriction (kPa)
	L(mm)	D(mm)	H(mm)	L(mm)	D(mm)	H(mm)	
1103A-33G	1082	453	692	1087	454	682	17
1103A-33TG1	1063	477	696	1068	478	685	20
1103A-33TG2	1024	484	702	1032	485	693	20
4TNV98-GPGE	1104	492	715	1109	492	703	
4TNV98-IGPGE	1056	480	696	1062	481	684	
4TNV98T-GPGE	1108	480	705	1113	481	692	
4TNV98T-ZGPGE	1117	477	709	1112	478	697	
4TNV98-ZGPGE	1058	479	693	1064	480	681	
4TNV98-GPGEC	1104	492	715	1109	492	703	
4TNV98T-GPGEC	1108	480	705	1113	481	692	

Note: 1.CG positions and weights have been calculated with Meccalte alternators
 2.The weight of MFT-S(125I) (empty) + Sub-baseframe = 145kg
 3.The weight of MFT-M(250I) (empty) + Sub-baseframe = 172kg

	Model	GDW35P/FNE	GDW40P/SNE	GDW50P/FNE
	Modello	GDW60P/SNE	GDW65P/FNE	GDW75P/SNE
	Modelo	GDW45Y/SNE	GDW40Y/FS3A	GDW45Y/FS2
	Modelo	GDW55Y/SNE	GDW45Y/FS3A	GDW55Y/ST4i
	Modèle	GDW45Y/ST4i	GDW38Y/FS3A	GDW40Y/FNE
Modell	GDW45Y/FNE			

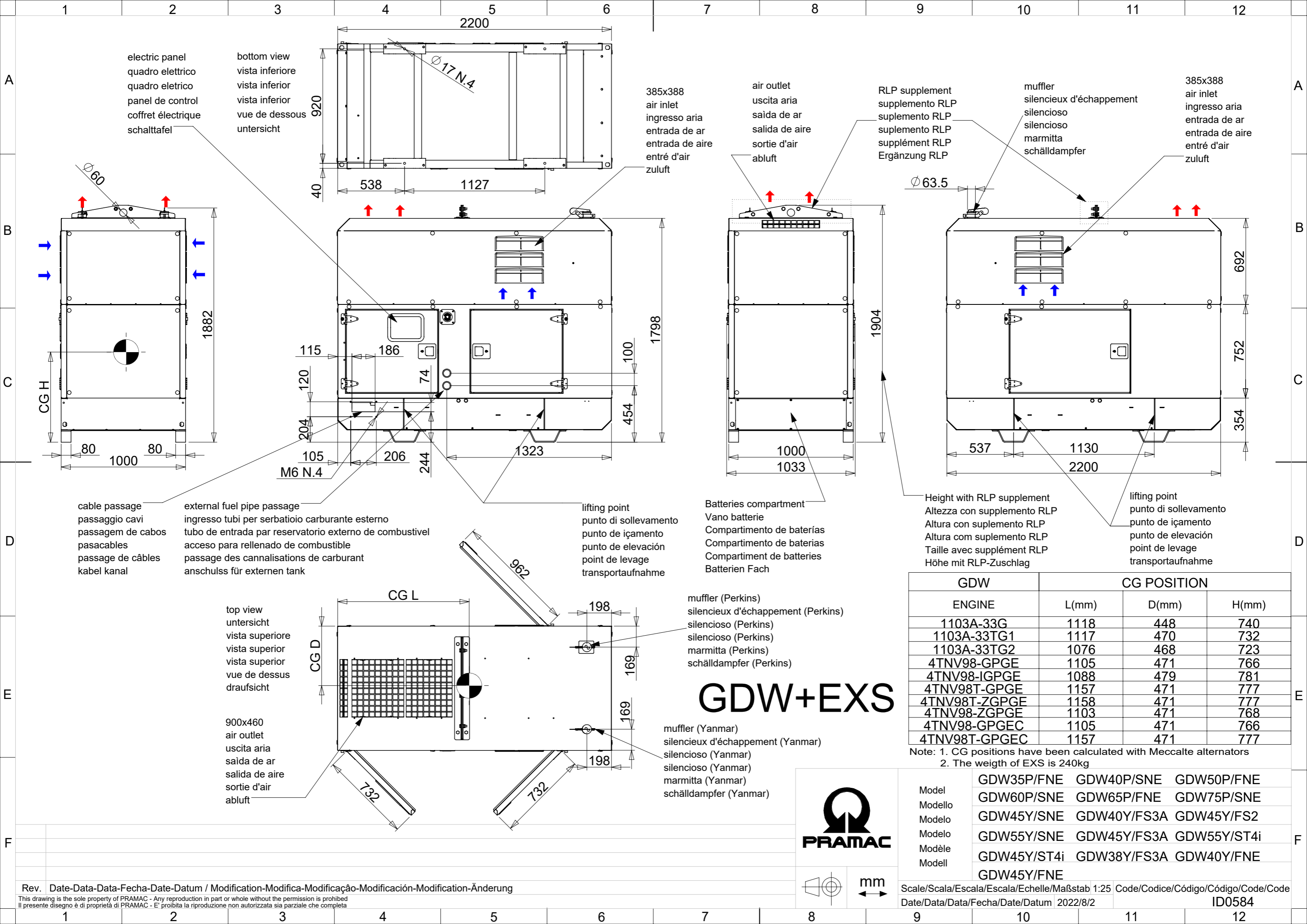


Engine Model	CG POSITION MFT-L(500I)			Maximum fuel supply restriction (kPa)
	L(mm)	D(mm)	H(mm)	
1103A-33G	1086	456	803	17
1103A-33TG1	1068	479	808	20
1103A-33TG2	1031	485	817	20
4TNV98-GPGE	1107	492	818	
4TNV98-IGPGE	1063	482	799	
4TNV98T-GPGE	1111	482	808	
4TNV98T-ZGPGE	1120	479	814	
4TNV98-ZGPGE	1065	481	797	
4TNV98-GPGEC	1107	492	818	
4TNV98T-GPGEC	1111	482	808	

Note: 1.CG positions and weights have been calculated with Meccalte alternators
2.The weight of MFT-L(500I) (empty) + Sub-baseframe = 216kg

	Model	GDW35P/FNE	GDW40P/SNE	GDW50P/FNE
	Modello	GDW60P/SNE	GDW65P/FNE	GDW75P/SNE
	Modelo	GDW45Y/SNE	GDW40Y/FS3A	GDW45Y/FS2
	Modelo	GDW55Y/SNE	GDW45Y/FS3A	GDW55Y/ST4i
	Modèle	GDW45Y/ST4i	GDW38Y/FS3A	GDW40Y/FNE
	Modell	GDW45Y/FNE		

Scale/Scala/Escala/Escala/Echelle/Maßstab 1:20 Code/Codice/Código/Código/Code/Code
Date/Data/Data/Fecha/Date/Datum 2022/8/2 ID0584



electric panel
quadro elettrico
quadro elettrico
panel de control
coffret électrique
schalttafel

bottom view
vista inferiore
vista inferior
vue de dessous
untersicht

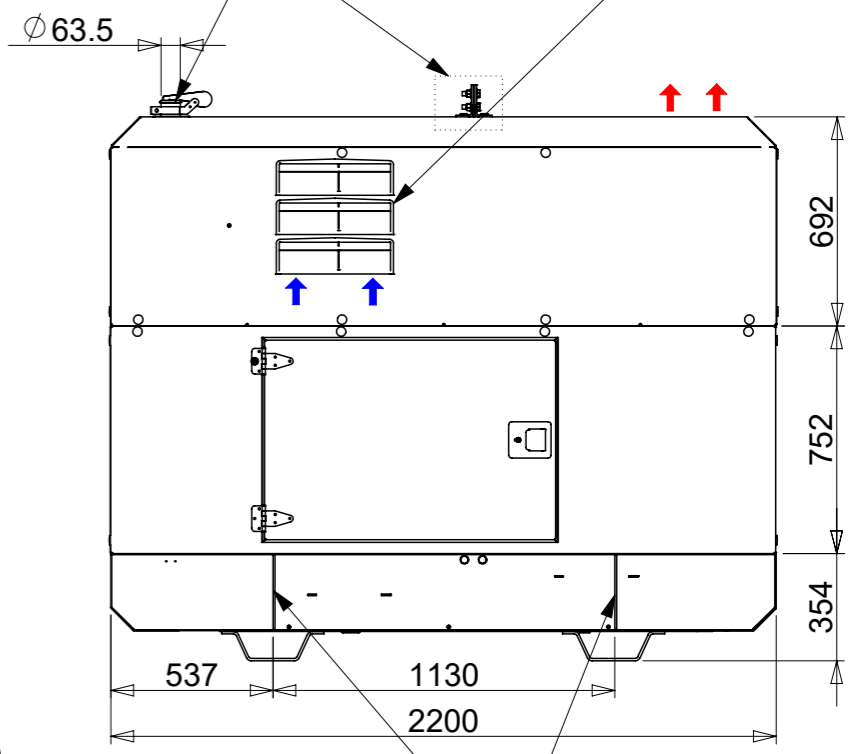
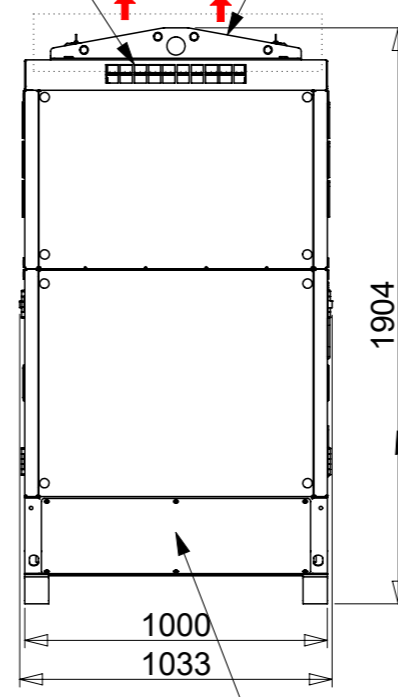
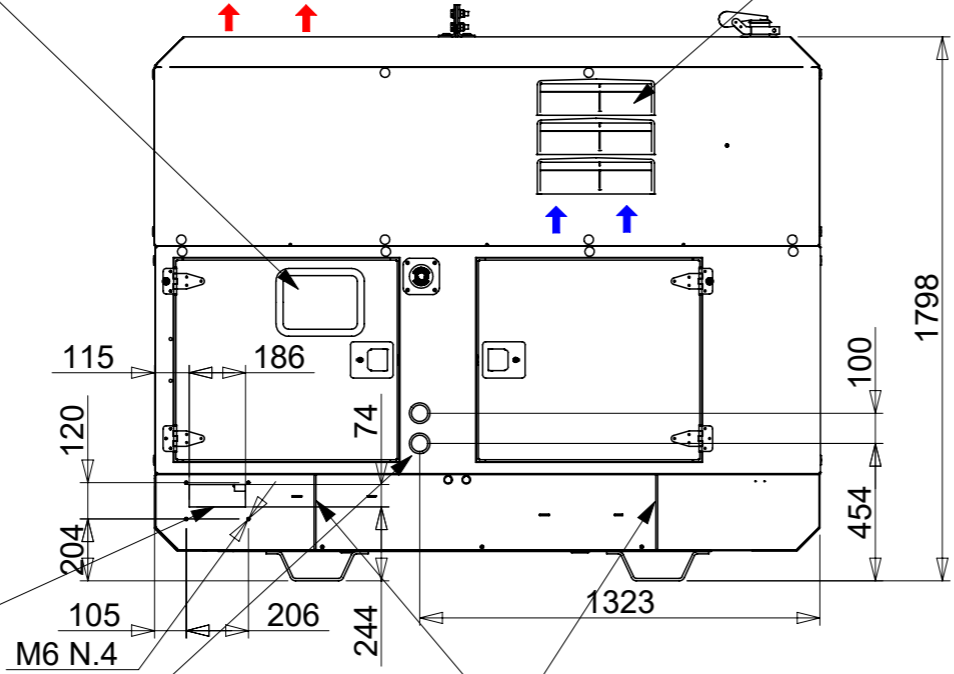
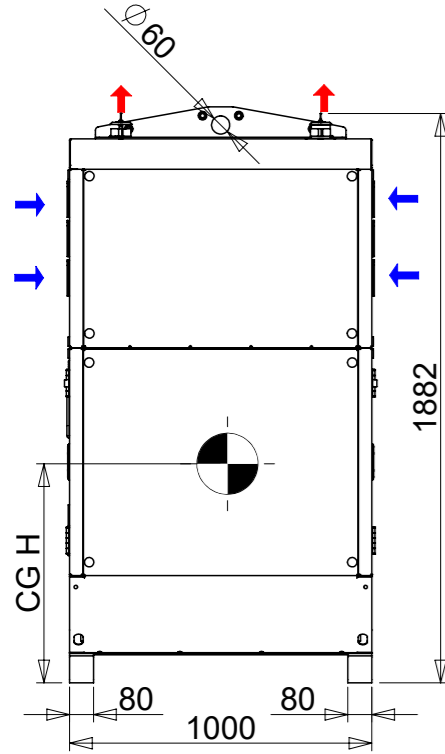
385x388
air inlet
ingresso aria
entrada de ar
entrada de aire
entré d'air
zuluft

air outlet
uscita aria
saida de ar
salida de aire
sortie d'air
abluf

RLP supplement
supplemento RLP
suplemento RLP
supplément RLP
Ergänzung RLP

muffler
silencieux d'échappement
silencioso
silencioso
marmitta
schälldampfer

385x388
air inlet
ingresso aria
entrada de ar
entrada de aire
entré d'air
zuluft



cable passage
passaggio cavi
passagem de cabos
pasacables
passage de câbles
kabel kanal

external fuel pipe passage
ingresso tubi per serbatoio carburante esterno
tubo de entrada par reservatorio externo de combustivel
acceso para rellenado de combustible
passage des canalisations de carburant
anschluss für externen tank

lifting point
punto di sollevamento
punto de içamento
punto de elevación
point de levage
transportaufnahme

Batteries compartment
Vano batterie
Compartimento de baterias
Compartiment de batteries
Batterien Fach

Height with RLP supplement
Altezza con supplemento RLP
Altura con suplemento RLP
Altura com suplemento RLP
Taille avec supplément RLP
Höhe mit RLP-Zuschlag

lifting point
punto di sollevamento
punto de içamento
punto de elevación
point de levage
transportaufnahme

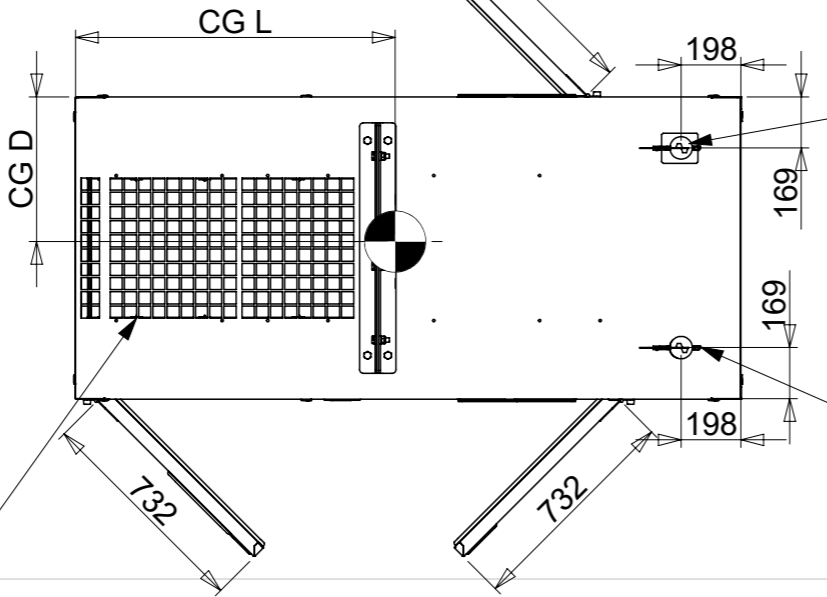
top view
untersicht
vista superiore
vista superior
vue de dessus
draufsicht

muffler (Perkins)
silencieux d'échappement (Perkins)
silencioso (Perkins)
silencioso (Perkins)
marmitta (Perkins)
schälldampfer (Perkins)

GDW+EXS

muffler (Yanmar)
silencieux d'échappement (Yanmar)
silencioso (Yanmar)
silencioso (Yanmar)
marmitta (Yanmar)
schälldampfer (Yanmar)

900x460
air outlet
uscita aria
saida de ar
salida de aire
sortie d'air
abluf



GDW	CG POSITION		
ENGINE	L(mm)	D(mm)	H(mm)
1103A-33G	1118	448	740
1103A-33TG1	1117	470	732
1103A-33TG2	1076	468	723
4TNV98-GPGE	1105	471	766
4TNV98-IGPGE	1088	479	781
4TNV98T-GPGE	1157	471	777
4TNV98T-ZGPGE	1158	471	777
4TNV98-ZGPGE	1103	471	768
4TNV98-GPGEC	1105	471	766
4TNV98T-GPGEC	1157	471	777

Note: 1. CG positions have been calculated with Mecalte alternators
2. The weight of EXS is 240kg



Model	GDW35P/FNE	GDW40P/SNE	GDW50P/FNE
Modello	GDW60P/SNE	GDW65P/FNE	GDW75P/SNE
Modelo	GDW45Y/SNE	GDW40Y/FS3A	GDW45Y/FS2
Modelo	GDW55Y/SNE	GDW45Y/FS3A	GDW55Y/ST4i
Modèle	GDW45Y/ST4i	GDW38Y/FS3A	GDW40Y/FNE
Modell	GDW45Y/FNE		

Rev. Date-Data-Data-Fecha-Date-Datum / Modification-Modifica-Modificação-Modificación-Modification-Änderung

This drawing is the sole property of PRAMAC - Any reproduction in part or whole without the permission is prohibited
Il presente disegno è di proprietà di PRAMAC - E' proibita la riproduzione non autorizzata sia parziale che completa

Scale/Scala/Escala/Escala/Echelle/Maßstab 1:25 Code/Codice/Código/Código/Code/Code
Date/Data/Data/Fecha/Date/Datum 2022/8/2 ID0584